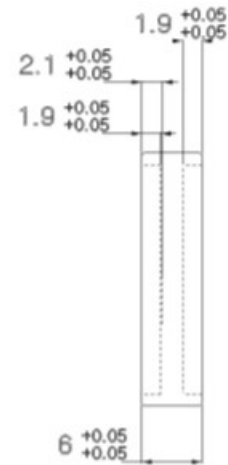
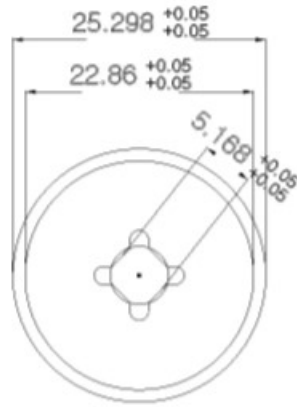


| REV | REVISED PER   | Date | Approved |
|-----|---------------|------|----------|
| A   | first release |      | TB       |
|     |               |      |          |
|     |               |      |          |



**NOTES:**

- 1: Black anodize
- 2: Chamfer edges .25 mm

| LightMachinery OP-4397-5mm   |                        |
|--|------------------------|
| dimensions mm  | material: aluminum     |
| X ±0.5      A ±1<br>XX ±0.1     AA ±0.1<br>XXX ±0.025  | third angle projection |
| This design and print is the property of LightMachinery Inc. and shall not be used as the basis for manufacture or sale of apparatus without the written permission of LightMachinery Inc. |                        |