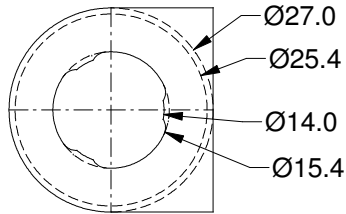
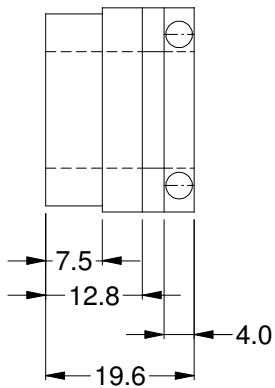


REVISIONS			
REV	REVISED PER	Date	Approved
A	first release	2015 Feb 4	IJM



- Notes:
1. Aluminum barrel, Delrin cap.
  2. Piezo is clamped at one end only, wires go at the Delrin end.
  3. M2 screws secure the cap.

**Piezo etalon mount**  
**LightMachinery OP-7670**

dimensions mm	material:
<b>Tolerances (unless otherwise noted)</b>	<b>Scale 1:1</b> Third angle projection
X ±0.5                    A ±1°	
X.X ±0.1                A.A ±0.1°	
X.XX ±0.025	
Drawing Template QT-730-002-E	

This design and print is the property of LightMachinery, Inc., and shall not be used as the basis for the manufacture or sale of apparatus without the written permission of LightMachinery, Inc.